



# BETHANY CREEK PARK LEGAULT HOMES CABINETRY

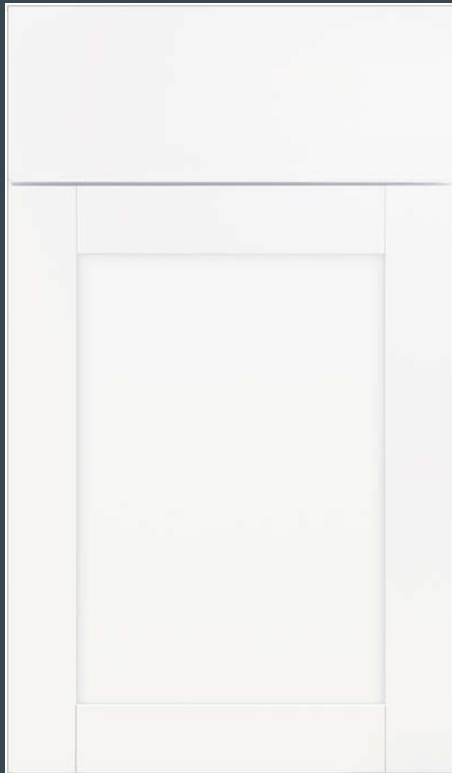
MID SOUTH BUILDING SUPPLY

*UPDATED FEBRUARY 2024*

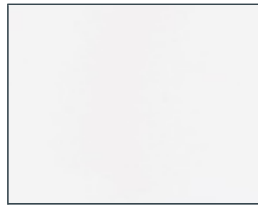
# LEVEL 1



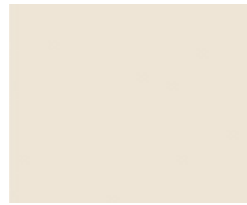
DOOR STYLE: **BRELLIN** FULL OVERLAY  
MATERIAL- PURESTYLE LAMINATE  
SOFT CLOSE DOORS & DRAWERS



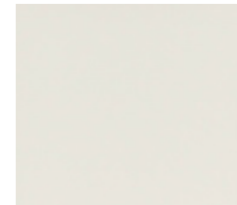
BRELLIN



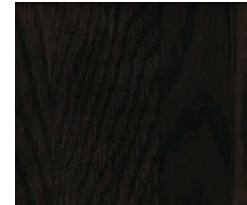
WHITE



COLADA



FROST



SARASPARILLA  
WOODGRAIN



STONE GRAY



GREYHOUND



ADMIRAL

LEVEL 1 FINISH OPTIONS

## LEVEL 2



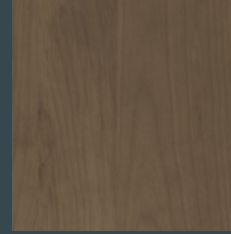
DOOR STYLE: **WINSTEAD** FULL OVERLAY  
SPECIES: MAPLE STAINS  
SOFT-CLOSE DOORS & DRAWERS



WINSTEAD



NATURAL



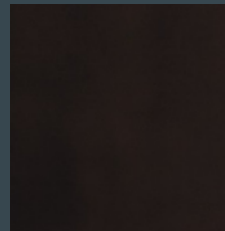
BURLAP



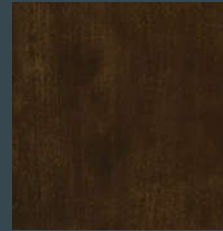
QUILL



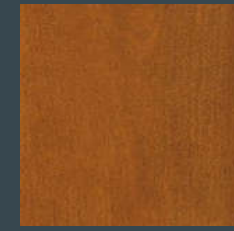
FLAGSTONE



SARSAPARILLA



UMBER



SADDLE



ARID

LEVEL 2 MAPLE STAINS

## LEVEL 3

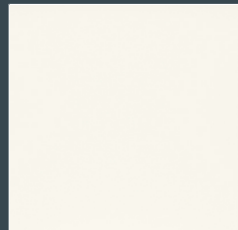


DOOR STYLE: **WINSTEAD**  
MATERIAL: PAINTED HARDWOOD  
SOFT-CLOSE DOORS & DRAWERS

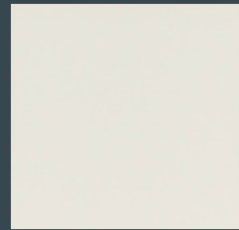
FULL OVERLAY



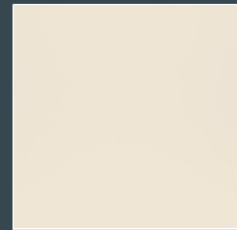
WINSTEAD



WHITE



FROST



COLADA



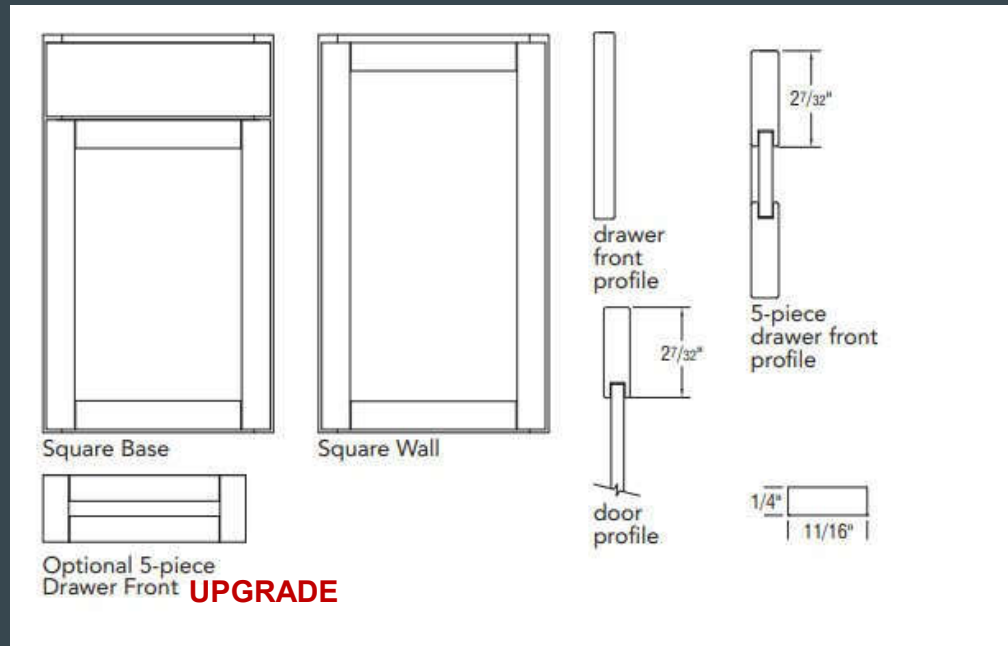
STONE  
GRAY



GREYHOUND

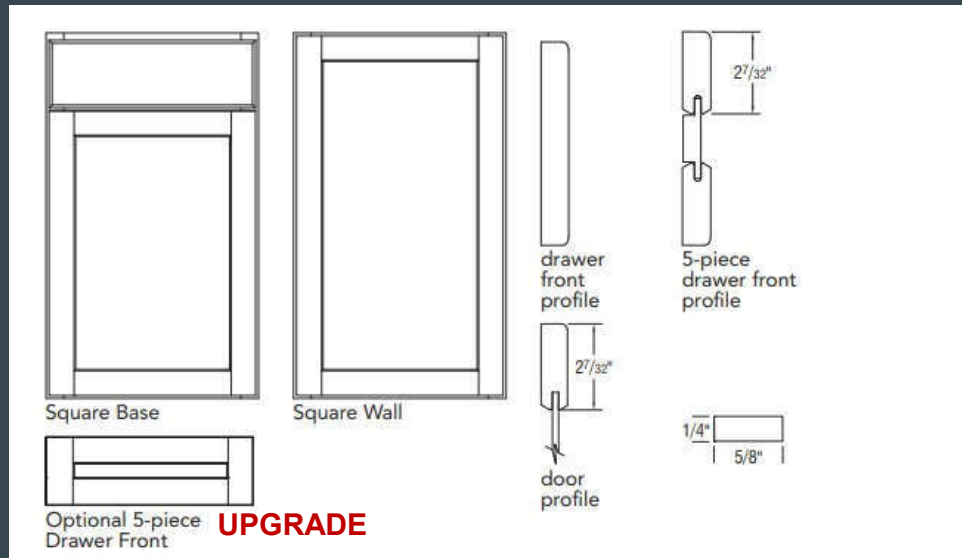
LEVEL 3 PAINT FINISHES

# BRELLIN SPECIFICATIONS



**PureStyle™** is innovative laminates that are applied to a wood or engineered wood substrate. Characteristics include crisp styling, consistent coloration, and abrasion-resistant durability.

# WINSTEAD SPECIFICATIONS



**Paint** will develop hairline cracks in the finish, most notably around the joints. This is a result of natural expansion and contraction of the genuine hardwoods used in the manufacturing of this product. Hairline cracks are not considered a defect in the cabinetry or finish and will not be considered a reason for product replacement. Painted doors, drawer fronts and components may be constructed of hardwood and/or engineered materials for a smoother finish and better resistance to warping, expansion and contraction.

**Maple** is a tight-grained, uniform hardwood that may include fine brown lines, wavy or curled markings, bird pecks and mineral streaks. It is predominately white to creamy-white in color with occasional reddish-brown tones.

# CABINETRY CONSTRUCTION

## CABINET CONSTRUCTION

SIDES	$\frac{3}{8}$ " Thick Furniture Board with Matching Laminate Exterior
BACK	$\frac{3}{8}$ " Thick Furniture Board
TOP (Wall)	$\frac{1}{2}$ " Thick Furniture Board
BOTTOM (Wall)	$\frac{1}{2}$ " Thick Furniture Board
BOTTOM (Base)	$\frac{3}{8}$ " Thick Furniture Board
CORNERS (Base)	Four Furniture Board Braces
SHELVES (Wall and Tall)	Adjustable $\frac{3}{4}$ " Thick Full Depth Furniture Board (15 lbs. Maximum weight per square foot)
SHELVES (Base)	Adjustable $\frac{3}{4}$ " Thick Half Depth Furniture Board Adjustable $\frac{3}{4}$ " Thick Full Depth Furniture Board on Open & Full Height Base Cabinets (Exclusions apply as noted throughout the book)
TOEKICK	$\frac{3}{8}$ " Thick x 4" High Furniture Board, Recessed $3\frac{3}{8}$ ", Unfinished (Requires cover: TOEKICK8/TOEKICK8-4)
FACE FRAME	$\frac{3}{4}$ " x $1\frac{1}{2}$ " Solid Wood

## DRAWER CONSTRUCTION

4-sided Wood Dovetail Drawer with Full Extension Guides.
$\frac{1}{4}$ " Thick Plywood, Fully Captured
Concealed Full Extension Drawer Guides with Smart Stop™
Dovetail Joint

## CABINET CONSTRUCTION



### Standard/Select

Furniture board sides, back, top and bottom

Furniture board shelves

Furniture board corner braces

## DRAWER CONSTRUCTION



### Select/All-Plywood¹

Solid wood drawer sides

Plywood bottom

Dovetail joints

Full-extension, Smart Stop™ guides

6-way Adjustable, Fully Concealed, Steel Hinges with Smart Stop™



# UPGRADE OPTIONS

**\*PLEASE NOTE ALL UPGRADE OPTIONS  
ARE AVAILABLE PLAN PERMITTING**

# DRAWER FRONTS

## UPGRADES

SHOWN ON WINSTEAD  
DOORSTYLE

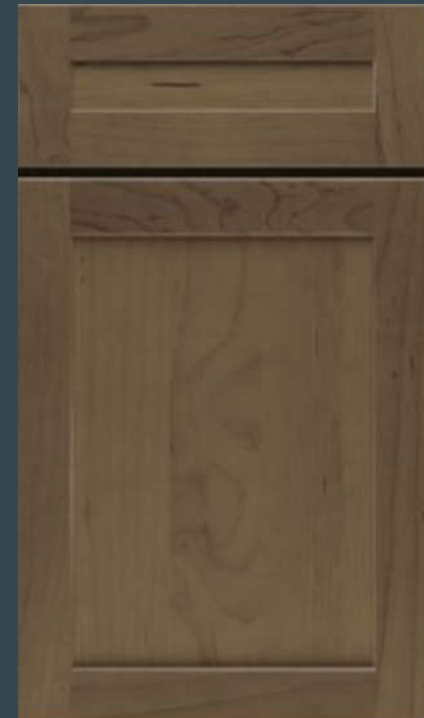
ALSO AVAILABLE ON  
BRELLIN DOORSTYLE

SLAB



**STANDARD  
SLAB DRAWER FRONT**

5-PIECE



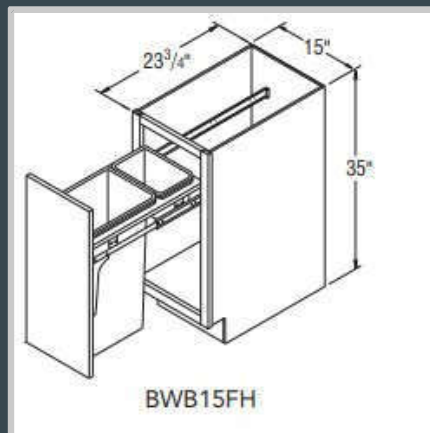
**UPGRADE  
5-PIECE DRAWER FRONT**

# TRASH UPGRADES



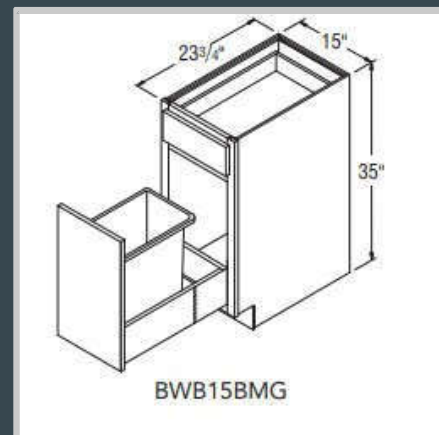
## SINGLE TRASH PULL OUT

### TOP MOUNT



FULL HEIGHT DOOR- (1) 50 QUART  
WASTEBASKET & SMALL TRAY

### BOTTOM MOUNT

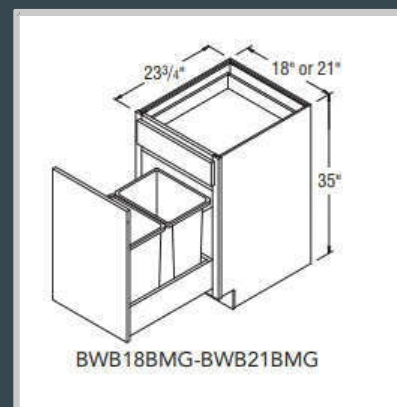
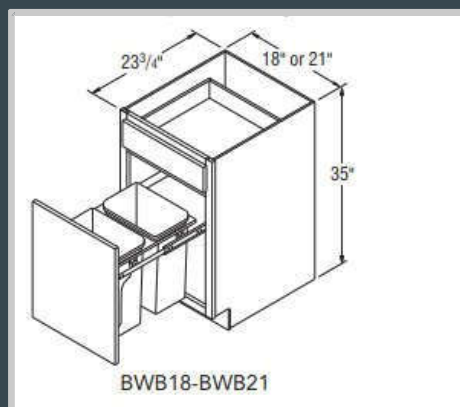


DRAWER ABOVE  
(1) 35 QUART WASTEBASKET



## DOUBLE TRASH PULL OUT

INCLUDES:  
DRAWER ABOVE  
TWO 35 QUART WASTEBASKETS



# PULLOUT SPICE

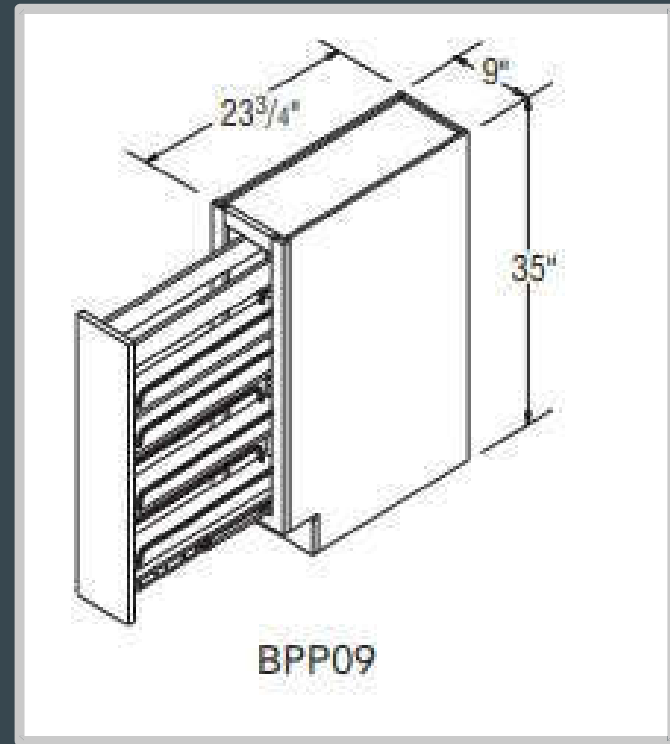
## UPGRADES



WOOD PULL OUT SPICE RACK

9IN CABINET W/ FULL HEIGHT DOOR

INCLUDES ADJUSTABLE SHELVES &  
CHROME RAIL SIDES



# ROLL OUT TRAYS

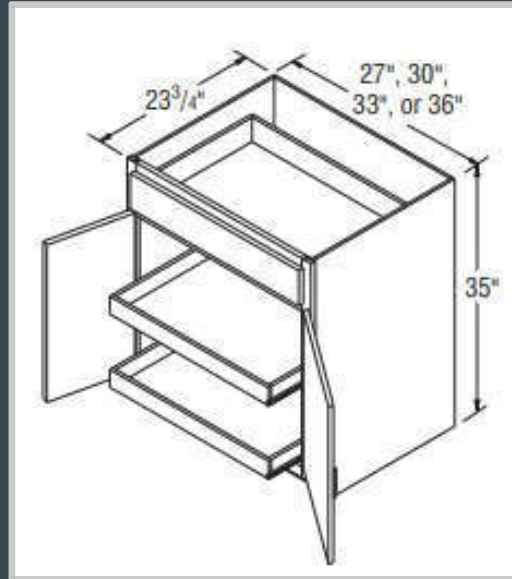
## UPGRADES



2 ROLL OUT TRAYS



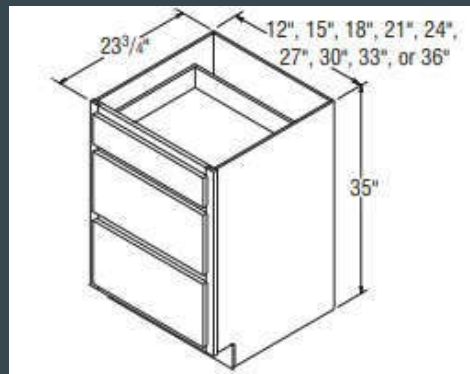
ROLL OUT TRAYS FEATURE  $\frac{1}{2}$ "  
SOLID-WOOD FRONT & FURNITURE  
BOARD SIDES & BACK



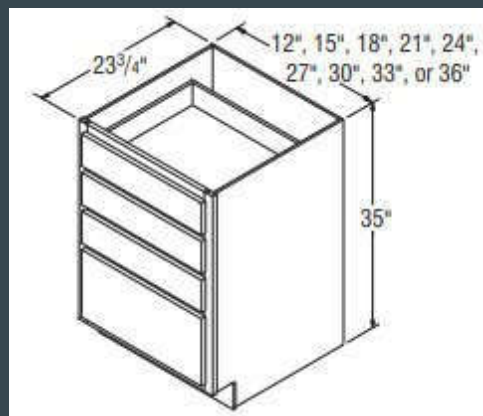
# DRAWERS

## UPGRADES

➤ 3 DRAWER BASE



➤ 4 DRAWER BASE



# DECORATIVE ENDS

## UPGRADES



STANDARD SIDE OF CABINET



DECORATIVE DOOR  
APPLIED TO END  
UPGRADE



# GLASS

## UPGRADES

- GLASS WALL CABINETS  
INCLUDE FINISHED INTERIOR
- OPTIONS:  
SINGLE DOOR & DOUBLE DOOR  
CLEAR GLASS  
GLASS WITH MULLIONS



CLEAR GLASS



GLASS WITH MULLIONS